

DWELL127

design | build

Picture yourself in a brand new home in Chapman Acres located in Hudson, WI.

The development features rolling hills, mature trees, walk-out sites and scenic views from these 3+ acre lots in St. Joseph township within the Hudson School district and near Perch Lake.

You will have quick access to County Road E, short drives to both Hudson and Stillwater makes this location incredibly desirable and convenient.

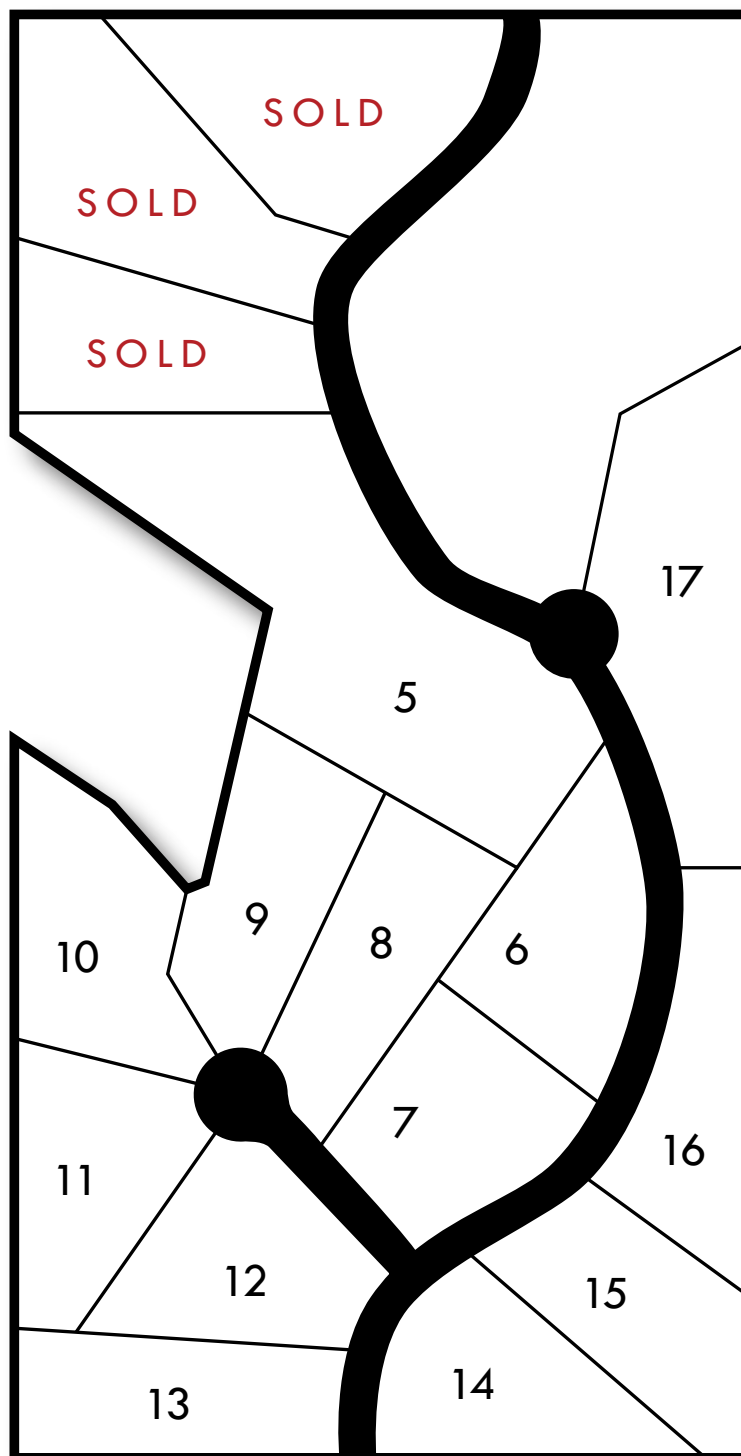
Act now and reserve your lot before they are gone.

715-997-0519



DWELL127.COM

Chapman Acres FROM THE \$500s



Chapman Acres

Aerial Detail

